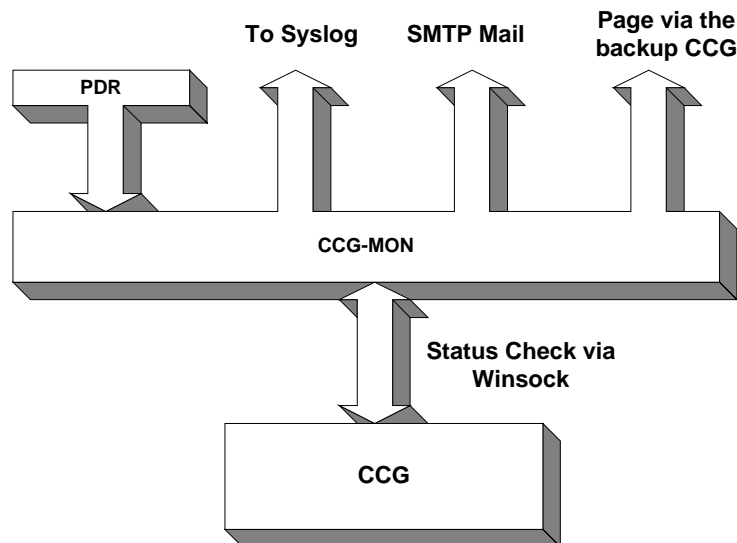


CCG-MON Monitoring Program for the CCG

CCG-Mon is an application to monitor the status of the CCG Messaging Gateway and alert the administrator of any status change of the CCG.

CCG-Mon does not have to run on the same PC as the CCG. It can reside on any PC as long as it can be connected to the CCG via a TCPIP link.



Monitoring Methods

There are two methods of monitoring:

❑ Winsock Status Check

In this method, the CCG-mon will continuously poll the CCG for the status of the modem port. The CCG-Mon will inform the administrator should any of the following occurs:

- The CCG cannot be reached
- The port status has changed (e.g. enabled to disabled, or vice versa)

❑ Link Statistics

The program will extract the total number of messages sent, as well as the percentage of successful pages per line. Also the number of pending messages are presented.

❑ Threshold Notification

The CCG-MON will notify the administrator(s) whenever the number of pending messages have reached a pre-defined threshold.

Alerting Methods

❑ Message Pager / SMS

When an alert is required, the CCG-Mon will send the alert message via a CCG defined in the configuration (note: this may be practical if there are two CCGs available)

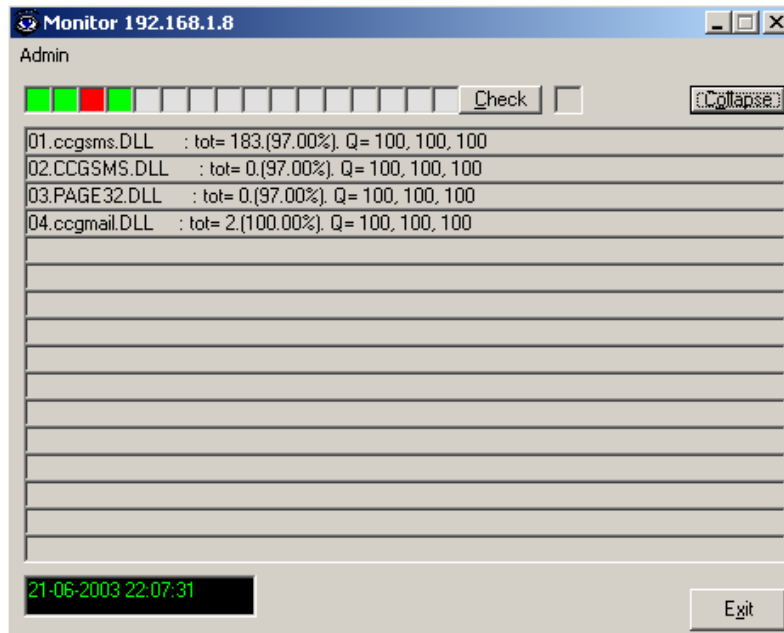
❑ SMTP Email

The CCG-Mon is able to send out an SMTP mail to any SMTP mailbox.

❑ SysLog

The alert messages can be sent to a UNIX console with syslog feature.

Sample Screen



Other Features:

- ❑ **Page-in Check**
When a Paging Data Receiver is connected, a user is able to page to the PDR (with a properly formatted message containing the User ID and a free text message) and expect a response back to an Email, a pager / handphone or to a SysLog. This feature allows for the administrator to check of the CCG whenever there is a need to.
- ❑ **Install as a Service**
CCG-Mon can be installed as a service so that it can be started without logging on to the NT.
- ❑ **Port Status Indicator**
CCG-Mon provides visual status of the CCG port (see picture above). If this is installed at the Administrator's workstation, it provides a convenient means of checking the status of the CCG.

System Requirements

- ❑ Intel Pentium 200 and above
- ❑ 64 MB RAM and above
- ❑ Paging Data Receiver (optional)